

specifications

	ENGINE AND DRIVETRAIN	CL 500 COUPE	CL 55 AMG COUPE	CL 600 COUPE
Engine	4,766-cc SOHC 24-valve 90° V-8. High-pressure die-cast alloy cylinder block. Alloy heads.	AMG-built intercooled supercharged 5,439-cc SOHC 24-valve 90° V-8. High-pressure die-cast alloy cylinder block. Reinforced crankshaft and valvetrain. Alloy heads. Lightweight camshafts.	Intercooled twin-turbocharged 5,513-cc SOHC 36-valve 60° V-12. Two-piece high-pressure die-cast alloy cylinder block. Alloy heads and pistons. Die-cast magnesium cylinder head covers.	
Net power	302 hp @ 5,600 rpm	493 hp @ 6,100 rpm	493 hp @ 5,000 rpm	
Net torque	339 lb-ft @ 2,700–4,250 rpm	516 lb-ft @ 2,750–4,000 rpm	590 lb-ft @ 1,800–3,500 rpm	
Compression ratio	10.0:1	9.0:1	9.0:1	
Fuel and ignition system	ME 2.8 engine management. Integrated sequential multipoint fuel injection and phased twin-spark ignition includes individual cylinder control of fuel spray, spark timing and phase, and antiknock. Electronic throttle includes adaptive accelerator, which provides more rapid throttle opening in response to the speed at which accelerator pedal is depressed. Two high-energy ignition coils and two spark plugs per cylinder, with 100,000-mile spark plug intervals (60,000 miles on CL 600). Fuel requirement: Premium unleaded, 91 pump octane.	ME 2.8 engine management.	ME 2.71 engine management.	
Intake system	Magnesium 2-stage resonance intake manifold increases intake runner length at lower rpm for improved response.	Helical high-pressure supercharger with liquid-to-air intercooler.	Twin turbochargers (one per cylinder bank, integrated in exhaust manifolds) with liquid-to-air intercoolers.	
Transmission	Driver-adaptive electronic 5-speed automatic. Touch Shift allows driver to manually downshift and allow upshifts by nudging the shift lever left or right from the Drive position. Shift into Optimum Gear programming allows one-touch selection of the best gear for maximum acceleration by holding the shift lever to the left of Drive for one second. Driver-selectable comfort mode starts vehicle moving in 2nd gear or a second Reverse gear, to help improve takeoff on slippery surfaces. Display in instrument cluster indicates selected gear range and standard/comfort mode.	Standard.	Not available.	
AMG SpeedShift™	Not available.	AMG SpeedShift™ programming provides up to 35% faster gear changes, automatically downshifts during braking, prevents unwanted upshifting while cornering, and features torque converter lockup in all forward gears. Fingertip manual mode allows direct-access shifting through forward gears via buttons on back of upper steering-wheel spokes, and will automatically intervene only to induce an upshift at redline and select 1st gear when the vehicle stops.	2.65:1	
Rear axle ratio	2.82:1	4.6 seconds	4.6 seconds	
Acceleration, 0–60 mph¹	6.1 seconds	4.6 seconds	4.6 seconds	
Emission certification	Ultra Low Emission Vehicle (ULEV).	Low Emission Vehicle (LEV).	Low Emission Vehicle (LEV).	
TRACTION AND STABILITY				
Electronic Stability Program (ESP) and Automatic Slip Control (ASR)	ESP compares the driver's intended course, via steering and braking inputs, to the vehicle's response, via lateral acceleration, rotation (yaw) and individual wheel speeds. ESP then brakes individual front or rear wheels and/or reduces excess engine power as needed to help correct understeer (plowing) or oversteer (fishtailing). ESP incorporates the functions of ASR traction control, which senses drive-wheel slip and individually brakes the slipping wheel or wheels, and/or reduces excess engine power, until control is regained. ²	Monocoque pillarless hardtop coupe with hybrid steel, aluminum and magnesium body. ³ Composite front fenders and trunk lid. High-strength/low-alloy steel reinforcements in critical areas.	Monocoque pillarless hardtop coupe with hybrid steel, aluminum and magnesium body. ³ Composite front fenders and trunk lid. High-strength/low-alloy steel reinforcements in critical areas.	
BODY AND CHASSIS				
Body	Front: Independent 4-link with anti-dive geometry. Rear: Independent 5-arm multilink with anti-dive geometry.	ABC, a true active suspension system, utilizes a coil spring and an electronically controlled hydraulic cylinder in series, plus a separate gas-pressurized shock absorber at each wheel. Using a total system pressure of up to 2,900 psi, ABC continually adjusts each wheel's suspension to counteract vibration, pitch, dive, squat and roll. ABC also provides automatic 4-wheel level control, driver-selectable ride height and automatic lowering at higher speeds. ⁴ Driver-selectable Sport mode virtually eliminates body roll for even flatter cornering and sharper handling response.	245/45ZR18 front, 265/40ZR18 rear, high-performance. ⁵	
Suspension	Rack-and-pinion with vehicle-speed-sensitive power assist and integrated hydraulic damper. 2.9 steering-wheel turns lock-to-lock. Turning circle: 37.6 ft/11.5 m, curb-to-curb.	5-twin-spoke design, 7.5Jx17 front and rear.	Highly polished forged 6-hole design, 8.0Jx18 front and rear.	
Active Body Control (ABC)	AMG thin-spoke monoblock, 8.5Jx18 front, 9.0Jx18 rear.	Not available.	AMG thin-spoke monoblock, 8.5Jx18 front, 9.0Jx18 rear.	
Steering	245/45ZR18 front, 265/40ZR18 rear, high-performance. ⁵	Not available.	245/45ZR18 front, 265/40ZR18 rear, high-performance. ⁵	
Wheels , aluminum-alloy, standard with optional Sport Package	Cross-drilled and internally ventilated front discs with 4-piston Brembo fixed-type calipers. Internally ventilated rear discs with dual-piston sliding calipers.	Cross-drilled and internally ventilated front discs with AMG 8-piston fixed-type calipers. Cross-drilled and internally ventilated rear discs with AMG 4-piston fixed-type calipers.	Cross-drilled and internally ventilated front discs with 4-piston Brembo fixed-type calipers. Internally ventilated rear discs with dual-piston sliding calipers.	
Tires , steel-belted radial, standard with optional Sport Package	ABS senses impending wheel lockup under heavy braking and pumps the front brakes individually or the rear brakes together (to help maintain stability) as needed up to 30 times per second, to prevent lockup and maintain steering ability. Brake Assist senses emergency braking via the speed at which the driver presses the brake pedal and immediately applies maximum available power boost, potentially reducing the overall stopping distance by eliminating the delay caused by a common human tendency not to brake hard enough, soon enough. Letting up on the brake pedal releases Brake Assist. ⁶	Electronic Brake Force Distribution helps ensure proper brake proportioning for differing vehicle load and maneuvering conditions, and promotes more even brake-pad wear by allowing for a greater rear-wheel contribution to straight-line braking compared to braking while cornering.		
Brakes , dual-circuit power-assisted				
Antilock Braking System (ABS) and Brake Assist				
Electronic Brake Force Distribution				
DIMENSIONS	EXTERIOR	INTERIOR	DIMENSIONS	
Wheelbase	113.6 in/2,885 mm	Headroom (front–rear)	36.9 in/936 mm–36.8 in/935 mm	
Overall length	196.4 in/4,989 mm	Legroom (front–rear)	42.1 in/1,069 mm–30.8 in/782 mm	
Overall height	55.4 in/1,408 mm	Shoulder room (front–rear)	59.3 in/1,505 mm–54.6 in/1,387 mm	
Coefficient of drag	CL 500 and CL 600: 0.28 CL 55 AMG: 0.29	Cabin capacity	88.5 cu ft/2,505 liters	
		Cargo capacity	12.3 cu ft/348 liters	

¹ Stated rates of acceleration are based upon manufacturer's track results and may vary depending upon model, environmental and road surface conditions, driving style, elevation and vehicle load. ² No system, no matter how sophisticated, can repeal the laws of physics or overcome careless driving actions. Please always wear your seat belt. ³ Due to the innovative materials and assembly procedures used in the production of the CL-Class, paintwork and body repairs should be performed only by a repair facility that has been certified by MBUSA as having the tools, equipment and training necessary to perform such repairs. MBUSA encourages its customers to exercise their right to choose a repair facility that is certified and recommended by MBUSA. Please call 1-800-FOR-MERCEDES for additional details. ⁴ Please obey local speed laws. ⁵ Z-rated tires are optimized for performance driving and may provide reduced ride comfort, increased tire noise, substantially increased treadwear and greater susceptibility to damage compared with H-rated tires. ⁶ Braking effectiveness also depends on proper brake system maintenance, and tire and road conditions.



equipment

CL 500 COUPE
CL 55 AMG COUPE
CL 600 COUPE

EXTERIOR FEATURES

- Power tilt/sliding tinted glass sunroof with one-touch express-open/close and memory.
- /● AMG-design sculpted front air dam, side skirts and rear apron.
- Dual chrome exhaust tips (four polished stainless steel tips on CL 55 AMG).
- Bi-Xenon High Intensity Discharge low-beam and high-beam headlamps with automatic level control, halogen auxiliary high beams, and heated headlamp washers.
- Driver-selectable light-sensing auto-on headlamps. Driver-programmable Daytime Running Lamps illuminate low-beam headlamps in daylight, with auto-on override in darkness.
- Halogen front foglamps. Single red rear foglamp.
- Touch Turn Signals flash three times with one touch of turn-signal lever, for lane-changing. Auxiliary LED turn signal indicators are integrated with side mirrors.
- Dual power mirrors, linked to driver's seat memory, automatically heated and with power fold-in. Auto-dimming left-side mirror. Parking-assist right-side mirror can be programmed to tilt down upon shifting to Reverse.
- Infrared-reflective glass helps reduce radiant heat penetration. Laminated side glass helps reduce UV penetration.
- Electrically heated rear window with automatic shutoff based on time, vehicle speed and outside temperature.
- Dual aero-blade windshield wipers with heated washer system. Heated wiper parking position. Infrared rain sensor automatically adjusts intermittent wiper delay based on rainfall.

LOCKING AND SECURITY

- SmartKey remote central locking system uses redundant infrared and radio-frequency signals for improved range, and rolling-code signal for protection from transmitter cloning.
- SmartKey uses an electronic code to unlock the gearshift and ignition. Removing SmartKey from ignition disables engine computer to help prevent unauthorized starting of the engine.
- SmartKey remote control integrates door lock/unlock buttons, trunk opener with valet lockout, removable valet key and panic alarm.
- Driver may selectively unlock only the driver's door and fuel filler, or both doors plus the trunk and fuel filler.
- SmartKey offers infrared-remote opening/closing of windows and sunroof, and can turn on Active Ventilated front seats from outside the car.¹
- Driver-programmable user-recognition feature links each SmartKey to driver's preferences (up to three individual users per car). Each SmartKey recalls memory features for driver's seat, mirrors and power steering column position, plus various climate control settings, for its assigned driver.
- Driver-programmable driveway locking can automatically lock all the doors when the car reaches 9 mph.
- Night security illumination uses the car's exterior lights to help illuminate a path after parking. Driver-programmable intervals allow lights to stay on for 60, 45, 30 or 15 seconds, or not at all.
- Locator lighting uses the car's lights to help light a return path when the car is remote-unlocked in darkness. Unlocking car activates illuminated entry system.
- Automatic anti theft alarm system with towaway protection, remote panic feature, and automatic notification via Tele Aid.³
- Emergency trunk release, located inside cargo area and illuminated for 60 minutes after trunk lid is closed.
- Pneumatic door and trunk closing assist.
- Integrated 3-button garage door control, compatible with HomeLink[®] components and some other systems.

● **STANDARD** ○ **OPTIONAL** — **NOT AVAILABLE**

CL 500 COUPE
CL 55 AMG COUPE
CL 600 COUPE

INTERIOR FEATURES

- Multifunction steering wheel provides controls for basic audio/phone functions and multifunction display.
- Power windows, with one-touch express-up/down for front windows and one-touch express-down for rear windows.
- Power rear-window sunshade, with one-touch express-up/down.
- 4-way (tilt/telescoping) power steering column, with easy-exit feature and position linked to driver's seat memory.
- Electronic cruise control with digital display of selected speed upon engagement.
- Auto-dimming rearview mirror, with position linked to driver's seat memory.
- Automatic low-intensity environmental comfort lighting of the center console, door handles and front footwells.
- Dual Xenon front reading lamps.
- Courtesy lamps with programmable fade-out time. Entrance lamps in both doors.
- Dual illuminated vanity mirrors, with both magnifying and standard lenses.
- Front and rear retractable dual cupholders.
- Front center armrest with illuminated, climate-controlled storage.
- Parcel net in right front footwell.
- Rear center console with laser-cut wood rolltop cover.
- Folding rear center armrest.
- Magazine pockets on both front seatbacks.

CLIMATE CONTROL

- 100% CFC-free dual-zone automatic climate control with adjustable high-flow/low-draft vents in dash, doors, and rear of console. Individual left and right electronic controls for temperature and airflow direction, with dual automatic modes and a selectable automatic mode for the center dash vents.
- REST mode can ventilate cabin or recirculate residual heat for up to 30 minutes after car is turned off.
- Electrostatic dust and pollen filter.
- Activated charcoal filter with smog-sensing automatic recirculation of filtered cabin air.
- Tunnel mode closes all windows, the sunroof and incoming air vents via the air-recirculation button or charcoal filter button.
- 4-way sun sensor helps compensate for the effects of directional sunlight on the occupants.
- Humidity/dewpoint sensor helps reduce window fogging during humid weather, and helps prevent overdrying of cooled air.
- Seat-belt usage sensors allow climate control to focus first on occupied seating positions.

SEATING AND TRIM

- 14-way power front seats, each with pneumatically adjustable lumbar support and 3-position memory.
- Heated front seats.
- /● Active Ventilated front seats with 8 internal cooling fans plus heating feature.
- Dynamic multicontour front seatbacks, pneumatically adjustable, with massage feature.
- Individual rear seats.
- Courtesy folding feature with obstruction sensor power-glides front seats forward for easier rear-seat access, then restores seat position.
- Hand-fitted leather upholstery on seats, head restraints, dash, doors, armrests, steering wheel and shift knob.
- AMG-design perforated leather in seating areas.
- Exclusive leather interior treatment with glove-soft Nappa leather hand-fitted to seats, head restraints, dash, console, doors, armrests, rear shelf, steering wheel and shift knob; plus Alcantara covering pillars, visors and ceiling.
- Chestnut or burli walnut wood trim on doors, front and rear consoles, shift knob and shift gate.
- Chestnut or burli walnut wood trim on steering wheel.
- Wood-trimmed overhead console, rear-cabin control panel, and cupholder cover in rear center armrest.
- Velour floor carpeting and floor mats (exclusive AMG floor mats on CL 55 AMG).

¹ Option as part of an Option Package. See optional equipment on next page. ² Active Ventilated seats are optional on CL 500 as part of Comfort Package CL3. ³ First year's Tele Aid service provided at no additional cost with subscription and includes 30 minutes airtime (including required acquaintance call). Subscription is required for service to be active. Tele Aid operates only where cellular and GPS coverage are available. Owner must authorize stolen vehicle tracking and file a police report.

equipment



AUDIO AND COMMUNICATIONS

- ● COMAND Cockpit Management and Data system integrates navigation, AM/FM stereo/weatherband radio, in-dash single-CD player/CD-ROM drive, and controls for CD changer and phone with a 6.5" color-LCD in-dash screen.
- ● Fiber-optic network offers precise, high-speed communication among components.
- ● Bose® sound system with 8 speakers includes a dash-mounted center-fill speaker and a 10" Nd® Neodymium Iron Boron high-efficiency woofer. Bose AudioPilot™ digital processing monitors sound within the cabin and helps compensate for unwanted ambient noise with no perceived change in audio volume.
- ● Integrated trunk-mounted 6-disc CD changer.
- ● Integrated Motorola V60™ dual-band digital portable telephone with in-car voice control system for operation of commonly used phone and audio system features.
- ● In-dash navigation system uses Global Positioning System (GPS) satellites to determine the current location of your car, and map databases on CD-ROM.¹
- ● Tele Aid uses Global Positioning System (GPS) satellites to determine the current location of your car, plus a cellular link to provide 24-hour contact with Mercedes-Benz for emergency aid (SOS button), information (F-button) or Roadside Assistance (wrench button). Automatic Collision Notification engages SOS function if an air bag or Emergency Tensioning Device (ETD) deploys. Tele Aid also includes Automatic Alarm Notification, stolen vehicle tracking, and remote keyless unlocking service.²
- ● Tele Aid Concierge Service, standard with basic Tele Aid subscription, offers personal services via the F-button, including arrangements for restaurant, hotel, airline or car-rental reservations, tickets to cultural and sporting events or tourist attractions, and delivery of flowers or gifts.²

INSTRUMENTATION

- ● Electroluminescent analog speedometer, tachometer and gauges for fuel level and coolant temperature. Digital clock, outside temperature indicator, and display of Touch Shift gear selection and standard/comfort shift mode.
- ● Automatic illumination of displays and controls based on ambient light.
- ● Flexible Service System calculates and displays distance remaining to next basic maintenance service based on actual driving conditions, some indicators of oil condition, and engine loads, rpm and operating temperatures.
- ● Multifunction display in speedometer face can be scrolled via steering-wheel controls to show odometer, resettable trip meter, trip computer, Flexible Service System, oil level, digital speed readout, radio/CD status, phone status,³ next navigation instruction and driver-programmable vehicle settings, plus reminder and malfunction messages.

RESTRAINT SYSTEMS

- ● Integrated Restraint System: Driver and front passenger are each provided with a front air bag, a side-impact air bag, and a 3-point seat belt with an Emergency Tensioning Device (ETD) and belt force limiter.⁴ Front passenger's front air bag features dual inflation rates based on impact severity. Each rear passenger is provided with a side-panel-mounted side-impact air bag and a 3-point seat belt with ETD.
- ● Head Protection Curtains: In a side impact exceeding a preset threshold, a multi-chamber air bag deploys to cover the front and rear side windows on the affected side of the car.
- ● Integrated rollover sensor automatically deploys the ETDs and, if deemed necessary, the Head Protection Curtains in the event of a detected rollover. Occupancy sensor prevents the front passenger's front and side-impact air bags from deploying if the seat is unoccupied. Automatic Collision Notification engages Tele Aid SOS function if an air bag or ETD deploys.⁵ An ETD will not deploy if seat belt is unfastened.
- ● Universal LATCH system (Lower Anchors and Tethers for Children) at rear seating positions, as well as selectable seat-belt retractors at all passenger seating positions, help secure child seats.⁴
- ● Front seat belts attached to seat frames at all three points. Automatically height-adjusting rear shoulder belts.
- ● Front head restraints automatically height-adjust as the seats move fore-aft (with power override). Head restraints also adjust fore-aft manually.
- ● Dual rear-seat head restraints rise automatically when each seat belt is fastened, are manually adjustable fore-aft, and are driver-retractable for improved rearward vision when the rear seats are unoccupied.



INDIVIDUAL OPTIONS

- ● Distronic adaptive cruise control.
- ● Parktronic audio-visual parking assistance system. Sensors use sound waves to help detect nearby obstacles at parking speeds, and audio-visual indicators on dashboard and rear-cabin ceiling alert the driver to their proximity and direction.
- ● Keyless Go smart-card vehicle entry and starting system.
- ● Electronic trunk closer (via controls on driver's door and on trunk lid).
- ● Onboard tire-pressure monitoring system (indicated in multifunction display).
- ● Heated steering wheel (not available on *designo* editions).
- ● Integrated Motorola V60 dual-band digital portable telephone with in-car voice control system for operation of commonly used phone and audio system features.

OPTION PACKAGES

- — ○ **Sport Package CL2:** Staggered-width 18" AMG thin-spoke monoblock wheels with high-performance tires.⁵ AMG-design sculpted front air dam, side skirts and rear apron.
- ● **Comfort Package CL3:** Active Ventilated front seats with dynamic multicontour front seatbacks.

CL-CLASS *designo* EDITIONS

- ⁶ — ○⁶ **Silver Edition:** *designo* Silver metallic paint. Stone interior with brown poplar wood trim. Exclusive leather interior treatment with leather on dash, console, armrests and rear shelf, glove-soft Nappa leather hand-fitted to seats, head restraints and doors; plus Alcantara covering pillars, visors and ceiling. Stone floor mats with leather trim.
- ⁶ ○⁶ **Espresso Edition:** *designo* Mocha Black metallic paint. Charcoal interior with Light Brown Nappa leather and brown poplar wood trim. Exclusive leather interior treatment with Charcoal leather on dash, console, armrests and rear shelf; glove-soft Light Brown Nappa leather hand-fitted to seats, head restraints and doors; plus Alcantara covering pillars, visors and ceiling. Charcoal floor mats with leather trim.
- ⁶ ○⁶ **Cashmere Edition:** *designo* Cashmere metallic paint. Charcoal interior with Pebble Grey Nappa leather and Auburn maple wood trim. Exclusive leather interior treatment with Charcoal leather on dash, console, armrests and rear shelf; glove-soft Pebble Grey Nappa leather hand-fitted to seats, head restraints and doors; plus Alcantara covering pillars, visors and ceiling. Charcoal floor mats with leather trim.

¹ CD-ROM maps do not cover all areas nor all routes within an area. One regional CD-ROM is included with vehicle.

² First year's Tele Aid service provided at no additional cost with subscription and includes 30 minutes airtime (including required acquaintance call). Subscription is required for service to be active. Tele Aid operates only where cellular and GPS coverage are available. Owner must authorize stolen vehicle tracking and file a police report.

³ When so equipped.

⁴ **WARNING:** THE FORCES OF A DEPLOYING AIR BAG CAN CAUSE SERIOUS OR FATAL INJURY TO A CHILD UNDER AGE 13. THE SAFEST SEATING POSITION FOR YOUR CHILD IS IN THE REAR SEAT, BELTED INTO AN APPROPRIATE, PROPERLY INSTALLED CHILD SEAT, OR CORRECTLY WEARING A SEAT BELT IF TOO LARGE FOR A CHILD SEAT. **A CHILD UNDER 13 MUST NOT USE THE FRONT SEAT** UNLESS THE CHILD IS BELTED INTO AN APPROPRIATE, PROPERLY INSTALLED **BABYSMART-COMPATIBLE** CHILD SEAT. A CHILD UNDER 13 WHO IS TOO LARGE FOR A CHILD SEAT MUST NOT USE THE FRONT SEAT. SEE OPERATOR'S MANUAL FOR ADDITIONAL WARNINGS AND INFORMATION ON AIR BAGS, SEAT BELTS AND CHILD SEATS.

⁵ Z-rated tires are optimized for performance driving and may provide reduced ride comfort, increased tire noise, substantially increased treadwear and greater susceptibility to damage compared with H-rated tires.

⁶ Requires optional Parktronic system on all models, and Comfort Package CL3 on CL500.

AN EXTRA-EXTRAORDINARY MERCEDES

Inspiration and hard work. That's the story of any exceptional sports star or artist, and it's the story of the CL-Class coupes. Is that **sleek, pillarless shape** – sharpened for 2003 – the result of inspiration or hard work? Both, actually, with a strong, lightweight and sensuous body **composed of aluminum, magnesium and steel**. And like this special body structure, the CL-Class powerplants are benchmarks of high-performance artistry: the **muscular V-8** of the CL 500, the **CL 55 AMG's supercharged V-8** and the incredible new

twin-turbo V-12 of the CL 600. Every CL embraces the leadership of Mercedes-Benz driving and safety innovations like **Active Body Control (ABC)** – which is the only fully active suspension in production – and our **emergency-sensing Brake Assist**. And the already **sumptuous 4-passenger CL cabin** has been refined to an even more unforgettable state with new design details and materials. The hard work's done. Now you can enjoy the inspiration of the 2003 CL-Class.



CL 500 Coupe

athletic prestige



CL 600 Coupe

CL 500 Coupe shown with optional Distronic cruise control and tire-pressure monitoring system. CL 600 Coupe shown with optional Distronic cruise control and tire-pressure monitoring system.

A showcase of automotive technology you can enjoy every day.



CL 500

5.0-liter 24-valve V-8

302 hp @ 5,600 rpm

339 lb-ft torque @ 2,700-4,250 rpm

A POWERFUL DRIVING PARTNER

As your eye sweeps admiringly over the 2003 CL-Class, you'll note some changes that give this driver's car a fresh dose of allure. The **bold front end** rivets you, accented by crystal-clear lenses for the CL's **Bi-Xenon headlamps**. Restyled taillamps and mirrors — with integrated lighting to illuminate your approach — unite this captivating new look.

If you're drawn in by the CL 500's exterior, you'll be doubly rewarded by the **take-charge performance** of its **302-hp V-8**. With 339 lb-ft of peak torque available at just 2,700 rpm, you can rocket to 60 mph in 6.1 seconds.¹ Yet the CL 500 runs so clean, it's certified as an **Ultra Low Emission Vehicle** — the first exotic coupe ever to make that claim. A **driver-adaptive 5-speed automatic transmission**

follows every cue your right foot gives: More spirited acceleration is met with a more aggressive shift profile, while a relaxed touch to the throttle optimizes shifts for better fuel economy. The transmission's **Touch Shift** feature gives you manual-style control of gear selection by tapping the shift lever to the left or right. And when you need to pass traffic, just hold the lever to the left for a second, and the transmission automatically picks the best gear for acceleration.

And whether your attention is fixed on a majestic lost-highway cruise or the intense fun of a mountain two-lane, the brilliance of **Active Body Control (ABC)** and our Electronic Stability Program (ESP) is always ready to help maintain the CL 500's determined poise.

CL 500 Coupe shown with optional Distronic cruise control. ¹ Stated rates of acceleration are based upon manufacturer's track results and may vary depending upon model, environmental and road surface conditions, driving style, elevation and vehicle load.

supernatural performance



Striking new 17" alloy wheels reflect the attitude and the elegance of the CL 500.



New chrome accents and design details highlight the refined CL500 interior.

THE CL500 COUPE INTERIOR

This is a true 4-passenger coupe, warmly accented in **hand-polished chestnut or burl walnut wood** and upholstered in finely stitched, **hand-fitted leather**. The **heated front seats power-adjust 14 ways**, to reach your ideal fit. And 3-position memory for each front seat allows one-touch recall of your preferences. The settings can be automatically stored in your individual SmartKey, which even remembers how you set your CL's **dual-**

zone automatic climate control. The climate system also **monitors humidity** in the cabin, **filters dust, pollen and odors**, and **tracks the direction of sunlight** to help maintain a more consistent interior temperature. It even knows to focus first on occupied seats, based on which seat belts are buckled. The **8-speaker Bose® digital sound system** is tailored to the CL cabin, and features AudioPilot™, which compensates automatically,

almost imperceptibly, for ambient noise. The CL500's radio, in-dash CD player and navigation system,¹ plus the trunk-mounted **6-disc CD changer** and the optional voice-controlled digital phone, all work in concert via the car's COMAND system—with a new, larger **6.5" color display**. And buttons on the steering wheel operate various audio and phone functions, so you can control the music without taking your hands off the wheel.



CL500 Coupe shown with optional Parktronic system, Distronic cruise control and Comfort Package. ¹COMAND can play an audio CD in the CD-ROM drive when not navigating.

YOUR BASIC ULTRA-PREMIUM SPORTS COUPE

The CL 600 Coupe sets a new standard for the rest of the automotive world to live up to. Even without that engine, its pillarless design—riding on **new forged-alloy 18" wheels**—would secure this coupe's place in history. Even without that engine, its high-tech innovations would make the CL 600 an **engineering benchmark**. And even without that engine, the **superb craftsmanship** of the CL 600's interior would make it the textbook example of how to furnish a luxury

automobile. But when you factor in that engine—a new twin-turbocharged V-12 that makes **thunderous low-end torque** where many cars are barely coming off idle—that's when you begin to appreciate where the Mercedes-Benz reputation for building automotive legends comes from. The CL 600 is **one of the most well-turned-out performance cars ever put on the road**—with a level of civility none of its performance peers can match.

CL 600

5.5-liter twin-turbo V-12
493 hp @ 5,000 rpm
590 lb-ft torque @ 1,800–3,500 rpm

overwhelming
exclusivity



This may well be all the car you've ever wanted.

THE V-12 HEART OF A LION

When you possess **493 horsepower** under your hood and **590 lb-ft of torque starting at just 1,800 rpm**, the world pays close attention. That's a very exclusive neighborhood. And the CL 600 Coupe moves in with an **intercooled twin-turbocharged**

5.5-liter V-12. Enshrined in a cast-aluminum block and heads, with die-cast magnesium cylinder-head covers, the V-12 feeds its monumental thrust to the CL 600's rear wheels through an upgraded version of our 5-speed **Touch Shift** automatic transmission. And in

true Mercedes-Benz engineering fashion, the CL 600 manages two seemingly contradictory achievements: **Low Emission Vehicle certification** and a **0-to-60 time of just 4.6 seconds**. Never before has one been able to travel so quickly in such style.



CL 600 Coupe shown with optional tire-pressure monitoring system. 1 Stated rates of acceleration are based upon manufacturer's track results and may vary depending upon model, environmental and road surface conditions, driving style, elevation and vehicle load.



Exquisite materials transport you and your guests to the height of luxury.



SAVOR THE CL 600 COUPE INTERIOR

We invite you to judge the CL 600 interior by its cover: **Glove-soft exclusive Nappa leather** covers the seats, head restraints and armrests, as well as the dash, consoles, doors and rear shelf. Rich **burl walnut or chestnut wood** adorns the doors, front and rear consoles, and shift gate. The soothing feel of hand-fitted Nappa leather and hand-finished wood extends to your fingertips, gracing the steering wheel and shift knob. **Suede-like Alcantara** adds a soft touch to the visors, roof pillars and ceiling. Just as you'll savor the CL 600's interior, you'll cherish its **Active Ventilated and dynamic multicontour front seats**. They can warm you, cool you and help keep you dry with **eight tiny internal fans**. The seats adjust pneumatically for optimal support, and can even take some stress out of a long drive with a **pulsating lower-back massage**. And for the ideal in mobile communications, an **ultracompact Motorola V60™ digital portable phone** follows your voice commands when it's docked in the CL600's center console, and travels with you – even in mid-call – after you park.

CL 600 Coupe shown with optional Distronic cruise control and Keyless Go.

SPORT PACKAGE

The Sport Package option takes the impressive build of a CL 500 or CL 600 and gives it an even more highly charged stance. **New AMG-design lower bodywork** includes a front air dam with mesh grilles for the air intakes, sultry side sills and a dramatically

sculpted rear apron. And its imposing **18" AMG thin-spoke monoblock alloy wheels** are staggered in width and feature a new design. Sharp-turning 245/45ZR18 tires in front and asphalt-grabbing 265/40ZR18 rubber in back¹ underscore the sport in every CL-Class.

¹ Z-rated tires are optimized for performance driving and may provide reduced ride comfort, increased tire noise, substantially increased treadwear and greater susceptibility to damage compared with H-rated tires.



exhilaration

RESERVED FOR THE AFICIONADO

When you're ready for the ultimate in athletic grace, let the engineering masters at AMG – the high-performance division of Mercedes-Benz introduce you to the CL55 AMG. From the roar of its **supercharged V-8** to the sporting allure of its interior, the CL55 is a car **derived from the race track** for the street. On the outside, refined visual cues point to the performance edge: **AMG-design sculpted front air dam, side skirts and rear apron.** The CL55 wears new-design polished 18" AMG **twin-spoke aluminum-alloy wheels** carrying staggered-width 245/45ZR18 tires in front and 265/40ZR18 tires at the rear.¹ Enormous, race-bred brakes with **AMG 8-piston calipers** keep a tight rein on the cross-drilled, internally ventilated 14.2" front discs, while 4-piston calipers take charge of the CL55's rear braking. **AMG recalibrates the Active Body Control** with firmer suspension profiles to work with AMG-specific high-performance parameters. The **full dual exhaust** gets the last word on performance, with a central crossover that lets the CL55 AMG pour forth a throaty rumble from its **four polished exhaust tips.**

CL55 AMG Coupe shown on right with optional DISTRONIC cruise control. ¹ Z-rated tires are optimized for performance driving and may provide reduced ride comfort, increased tire noise, substantially increased treadwear and greater susceptibility to damage compared with H-rated tires.



CL55 AMG

Handcrafted, supercharged 5,439-cc 24-valve V-8
493 hp @ 6,100 rpm
516 lb-ft torque @ 2,750–4,000 rpm

A MASTERPIECE OF PERFORMANCE

The output of the CL55 AMG's handcrafted, **supercharged V-8** is extraordinary, with a broad, flat torque curve that delivers effortless performance. A staggering 493 hp launches you from **0 to 60 in 4.6 seconds.**² AMG's **SpeedShift™ programming** provides 35% faster gear changes, prevents unwanted upshifts during hard cornering, can downshift automatically during braking, and allows you to **pre-select the best gear for maximum acceleration.** A **fingertip manual mode** lets you shift through the CL55 AMG's forward gears by tapping buttons behind the upper steering-wheel spokes. So you can act nonchalant as you lay down **516 lb-ft of torque.** Of course, your grin will probably give you away.

² Stated rates of acceleration are based upon manufacturer's track results and may vary depending upon model, environmental and road surface conditions, driving style, elevation and vehicle load.



Enjoy breathtaking performance on par with the world's finest exotic GTs.

The CL55 AMG interior: A study in serious, and seriously comfortable, motoring.



CL 55 AMG INTERIOR

From the cockpit of a 493-hp sports coupe, you want an uninterrupted dialogue with the road. So the CL 55 AMG gets right down to business. An **AMG steering wheel** puts you in control with **integrated manual shift buttons**. Crisp AMG instrumentation keeps you informed. Exclusive AMG-design sport front seats offer deeper, firmer side bolsters. While the pneumatically adjustable **dynamic multi-contour front seatbacks** let you dial in just

the right amount of support for the high-speed sweepers and decreasing-radius turns on your list that day. There's even a **massage feature** for your lower back, to help reduce fatigue on longer drives. **Active Ventilated front seats** incorporate eight miniature fans to keep you cool and refreshed, and you can add heating on chilly days as well. The perforated **Nappa leather** upholstery improves seat breathability. And as subtle indications of this ultra-exotic

performance coupe's attention to detail, metal badges on the front seatbacks, exclusive floor mats, and stainless-steel door-sill trim all bear the AMG name. The CL 55 AMG Coupe cabin is a proper driver's environment infused with much of the philosophy that makes AMG what it is today – namely, that a modern supercar must deliver **exceptional livability along with exceptionally exhilarating performance.**

CL 55 AMG Coupe shown with optional Distronic cruise control.

CL-CLASS FEATURES AND OPTIONS

RAIN-SENSING WIPERS

The CL's intermittent wipers automatically adjust their frequency for you, based on the amount of rainfall that an infrared sensor detects on the windshield glass.



ANTITHEFT ALARM

Just locking it leaves it secure. Your CL's alarm system even includes an angle sensor to help prevent towaway or wheel theft.



EASY-ENTRY REAR SEATS

To help make getting in and out of the rear seats easier, each front seat automatically power-glides toward the front of the car when you tilt the seatback forward.



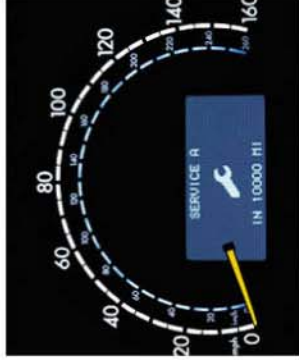
6-DISC CD CHANGER

The 6-disc CD changer is concealed in the trunk, but you can operate it from the in-dash COMAND center and steering-wheel controls.



POWER HEAD RESTRAINTS

The front head restraints height-adjust automatically as you adjust the seats fore and aft. The rear head restraints rise when rear seat belts are buckled, and can be retracted at the touch of a button for a clearer rearward view when there are no rear passengers.



FLEXIBLE SERVICE SYSTEM

The Flexible Service System in the CL-Class determines basic maintenance intervals based on how you drive, not just how far.



BI-XENON HEADLAMPS

High-intensity low-beam and high-intensity headlamps use an electrified arc of xenon gas to generate a light that's perceived more like natural daylight. The automatic leveling feature of the headlamps helps reduce glare.



POWER REAR SUNSHADE

When the sun blazes, the fine-mesh power rear-window sunshade helps to keep the cabin of the CL cooler without hindering the driver's rear view.



ACTIVE VENTILATED FRONT SEATS¹

Each front seat contains eight tiny fans that circulate cooling air around you at the touch of a button. And if you desire soothing warmth, the seats also offer two levels of heating that you can activate with or without the ventilation.

¹ Standard on CL55-AMG and CL600. Optional on CL500 only as part of Package CL3.

CL-CLASS FEATURES AND OPTIONS

MOTOROLA V60 DIGITAL PHONE¹

The **ultracompact Motorola V60™ portable digital** phone docks in the center console of your CL-Class to give you hands-free operation, as well as voice control of the phone and audio system.



ELECTRONIC TRUNK CLOSER

This option allows you to **fully open or close the CL's trunk lid electrically without touching it**. Push a button in the cabin or inside the trunk, and the lid motors itself open or closed.



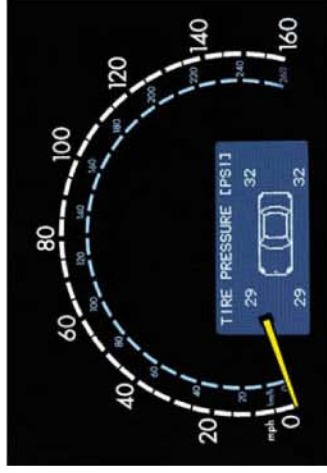
HEATED STEERING WHEEL

This new option helps take some of the chill out of a cold day. Activating this feature brings **quick warmth to the leather of the steering-wheel rim**.



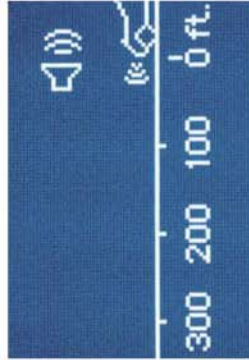
ONBOARD TIRE-PRESSURE MONITORING SYSTEM

This option monitors the air pressure and temperature of the four mounted tires, and alerts you via the **in-dash message center** if a tire's pressure is outside a specified range.



DYNAMIC MULTICONTOUR SEATBACKS²

Using multiple air chambers, these front seats can adjust pneumatically to **your ideal level of support**. They can even **massage your lower back** to reduce fatigue while you drive.



DISTRONIC CRUISE CONTROL³

This option – the first adaptive cruise control – monitors the distance of vehicles ahead to help **maintain your speed and following range automatically**.



KEYLESS GO

With optional Keyless Go, a computer-chip card in your purse or pocket lets you lock and unlock your CL, start and stop its engine, and drive off—**all without ever touching a key**.



PARKTRONIC PARKING ASSISTANCE SYSTEM

When you're parking your CL, this innovative option uses sound waves to **detect nearby front or rear obstacles**. Audio and visual indicators in the cabin alert you to objects that might not be within your line of sight.

¹Optional on CL 500 and CL 55 AMG. ² Standard on CL 55 AMG and CL 600. Optional on CL 500 only as part of Package CL3. ³ DISTRONIC adaptive cruise control is no substitute for active driving involvement. It does not react to stationary objects, nor recognize or predict the curvature and lane layout of the road or the movement of vehicles ahead, and it can only apply a maximum of 20% of vehicle braking power. It is the driver's responsibility at all times to be attentive to traffic and road conditions, and to provide the steering, braking and other driving inputs necessary to retain control of the vehicle.

With a wide-open design like this, it could only be a Mercedes-Benz.



engineering ecstasy



TIMELESS AESTHETICS

The open, flowing feel of a CL is the result of its **pillarless design**, meaning the car has no central window post. This is a time-honored coupe style that disappeared from most other carmakers' lineups in the 1970s, when rollover and side-impact standards became more stringent. But at Mercedes-Benz, we know that nothing can match the flowing grace of an open coupe, so we applied our knowledge of building strong bodies to preserve the romance. The CL uses a **lightweight yet**

extremely rigid structure that employs exotic materials and advanced design. **Triple-layer roof pillars, die-cast magnesium door shells, aluminum/steel laminates and advanced body geometry** all work together to create this remarkably strong structure. This kind of achievement requires a passion for technology and an appreciation of tradition, which may be why the only pillarless coupes made today are from Mercedes-Benz.

incomparable

in corners



UNPARALLELED HANDLING

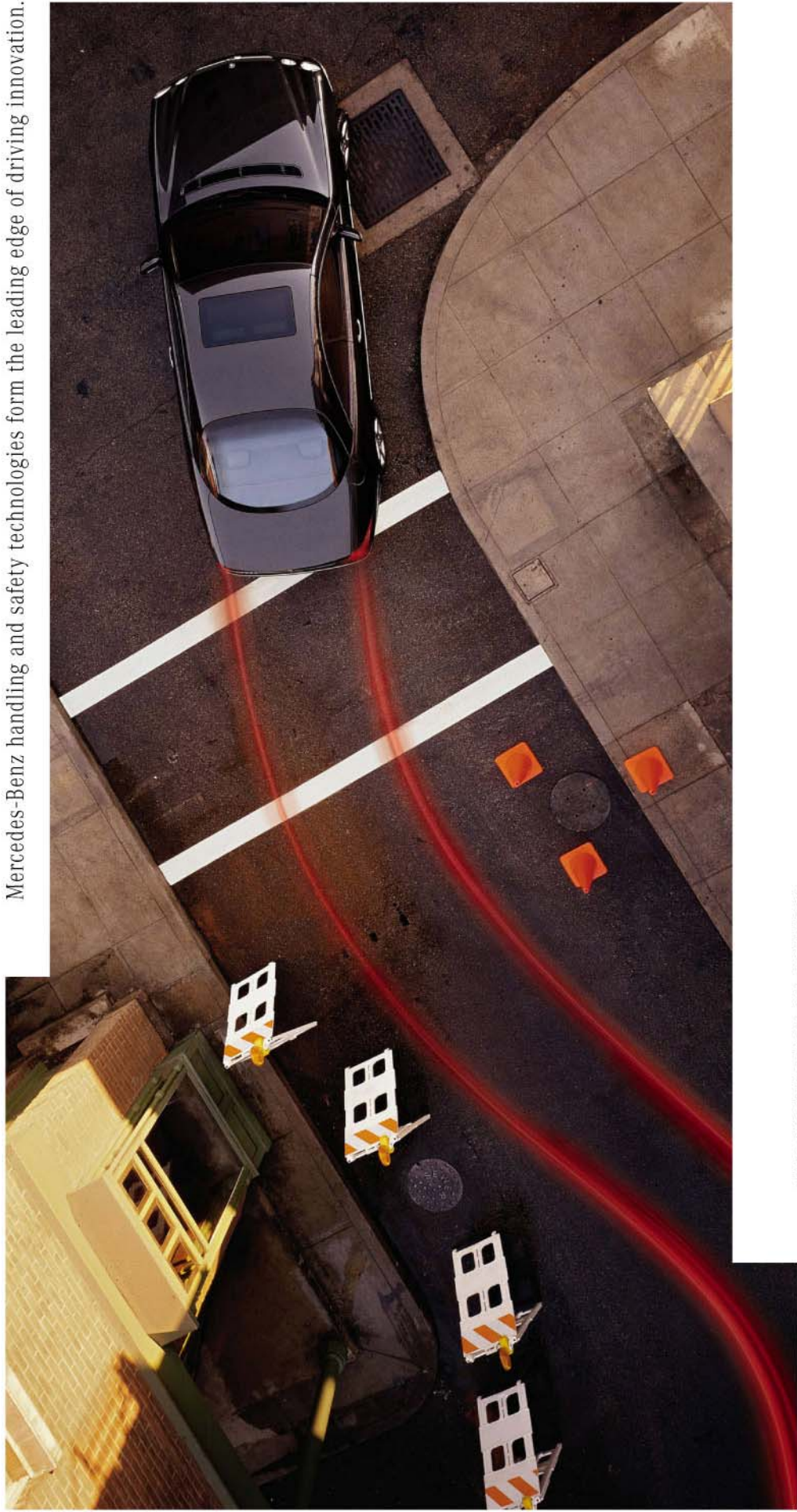
The crisp handling and composed ride of a CL-Class starts with a first-rate suspension. Up front, there's an independent 4-link setup with anti-dive geometry. In the rear, you'll find an independent 5-arm multilink design first patented by Mercedes-Benz. Then we take the CL's ride and handling to an even higher level with **Active Body Control (ABC)**, the only fully active suspension in production. Rather than simply reacting to road surfaces and cornering forces like a conventional suspension, ABC uses high-pressure hydraulics to generate forces that help counteract lean, dive and all manner of disturbances. This helps to ensure unprecedented balance, control and comfort for the CL and its driver. And for even flatter cornering and sharper handling, the driver-selectable **Sport mode virtually eliminates body roll altogether**. ABC also features **driver-selectable ride height** and automatic lowering at higher speeds.¹

CL 500 Coupe shown with optional Sport Package.
1 Always obey local speed laws.



ABC's instant response to every variation in the road's surface not only polishes the CL's handling, it also helps ensure a liquid-smooth ride.

Mercedes-Benz handling and safety technologies form the leading edge of driving innovation.



THE CONFIDENCE OF CONTROL

The CL's **rear-wheel-drive setup** establishes a balanced front/rear weight distribution for excellent handling and control. Traction and stability are further enhanced by the genius of our **Electronic Stability Program (ESP)**. By monitoring your steering and braking in corners, ESP can sense the instant that your CL-Class begins to slip away from its intended course. The system responds by braking individual wheels and/or reducing

excess power to help counteract plowing or fishtailing and put you back on line. ESP also incorporates **Automatic Slip Control**, which helps eliminate wheelspin under acceleration.¹

When the time comes to stop, the CL stops quick and clean. Up front, **4-piston Brembo calipers** work on massive ventilated and **cross-drilled brake discs**, while twin-piston calipers grasp ventilated discs at the rear.

Antilock brakes can help you retain steering control during heavy braking. And **Brake Assist** – a safety innovation pioneered by Mercedes – can detect a panic stop from how quickly you hit the brakes, and apply full braking boost until you let up.² It all adds support to a simple equation: Control plus confidence equals peace of mind.



CL500 Coupe shown with optional Sport Package. ¹ No system, no matter how sophisticated, can repeal the laws of physics or overcome careless driving actions. Please always wear your seat belt. ² Braking effectiveness also depends on proper brake system maintenance, and tire and road conditions.

COMPREHENSIVE SAFETY ENGINEERING

Every Mercedes-Benz is developed with an integrated system of occupant protection. In the CL-Class, that system starts with the extensive use of **high-strength/low-alloy steel** in critical areas throughout the body. The CL cabin is defended by **advanced crumple zones** that deform to absorb some of the impact energy of a collision, helping to preserve the passenger space.

Eight air bags help to shield the CL coupe's four occupants: two front air bags, four side-impact air bags, and **Head Protection Curtains** that inflate to cover the side windows on the affected side of the car in a side impact exceeding a preset threshold. The front passenger's front air bag is designed to inflate in two stages, depending on impact severity. In either a front or rear impact of sufficient severity, **Emergency Tensioning Devices (ETDs)** remove seat-belt slack. And **belt force limiters** help distribute peak impact forces more evenly between the CL's front seat belts and the front air bags.

The CL is a study in attention to detail: Each **rear-seat head restraint rises automatically** as the rear passengers fasten their seat belts. If your CL **senses a rollover**, it automatically activates the ETDs to help hold the occupants snug, and if deemed necessary, deploys the Head Protection Curtains to help protect them from head injury and broken glass. And if an air bag or ETD deploys, the Tele Aid system in **your CL-Class will automatically call for help**, even if you are unable to speak.¹

Mercedes-Benz builds vehicles for people. That's why our safety-testing regimen – with **no fewer than 28 different crash tests** – demands more integrity from a car than the laws of any government. This mission is nothing new for us – the CL's **impact-absorbing front and rear crumple zones** advance an innovative safety idea that Mercedes-Benz patented more than half a century ago.

¹First year's Tele Aid service provided at no additional cost with subscription and includes 30 minutes airtime (including required acquaintance call). Subscription is required for service to be active. Tele Aid operates only where cellular and global positioning system coverage are available.



strength and security



designo

EDITIONS

Silver Edition
Espresso Edition
Cashmere Edition

THE AUTOMOBILE AS FINE ART

The three *designo* editions¹ offered for the CL-Class push the coupe's envelope of **exclusivity into tantalizing new territory.** Each is a vision, a unique blend of color and materials. The CL interior is blanketed with the natural look and supple feel of **hand-selected, Nappa leather** in exquisite colors, hand-fitted to the seats, head restraints and door trim. Suede-like Alcantara upholsters the pillars, visors and ceiling. **Radiant designo wood trim** — matched by eye, shaped and finished by hand — captivates your attention and rewards your touch. And to complete your exercise in individuality, *designo* stylists wrap the CL in **specially chosen exterior colors.**



SILVER EDITION ▲

The cool grace of a CL 500 or CL 600 Silver Edition starts with its **designo Silver metallic paint.** Its interior immerses you in a world of glove-soft **designo Stone Nappa leather** — on the doors, seats and head restraints. In between, rich **brown poplar wood** adorns the steering wheel, shift knob, dash and doors.



ESPRESSO EDITION ▲

The **designo Mocha Black metallic paint** invites your attention. Within the Charcoal interior, **designo Light Brown Nappa leather** covers the seats, head restraints and door trim inserts. Warm **brown poplar wood trim** accents the CL cabin. Even the **designo** floor mats are edged in supple leather.



CASHMERE EDITION ▲

Let the softness of the **designo Cashmere metallic paint** draw you near. Once inside, be soothed by the **designo Pebble Grey Nappa leather** on the seats and door trim, set amid a rich Charcoal interior trimmed with deep **Auburn maple wood.** Even your feet will find comfort in plush **designo** floor mats with borders of soft Charcoal leather.



individual expression

CL 500 Espresso Edition shown with optional Sport Package. CL 500 Silver and Cashmere Editions shown with optional Distronic cruise control.
¹ *designo* editions require optional Parktronic system on all models, and Comfort Package CL3 on CL 500. Silver Edition not available on CL 55 AMG.