

# 2003 SLK-Class equipment



## SLK230 KOMPRESSOR COUPE/ROADSTER SLK320 COUPE/ROADSTER SLK32 AMG COUPE/ROADSTER

### EXTERIOR FEATURES

- One-button electric/hydraulic retractable steel hardtop. Double-hinged trunk lid opens at front edge for top retraction and at rear for access to cargo area. Attachable fine-mesh wind deflector.
  - Color-keyed door handles and side sills. Polished stainless-steel exhaust finisher (with dual tailpipes on SLK32 AMG).
  - <sup>1</sup> Color-keyed AMG-design sculpted front air dam with black mesh air intakes, side skirts and rear apron.
  - Color-keyed AMG-design rear spoiler on edge of trunk lid.
  - Variable-focus halogen headlamps and front foglamps. Single red rear foglamp. Auxiliary turn signals in side mirrors.
  - Dual automatically heated power mirrors. Auto-dimming left-side mirror.
  - Electrically heated rear window with automatic shutoff timer. Heated windshield washer system.
- ### LOCKING AND SECURITY
- Remote central locking system with rolling-code signal protection. 3-button remote transmitter integrates folding key, door lock/unlock buttons, and panic alarm. Driver may selectively unlock only the driver's door and fuel filler, or both doors plus the trunk and fuel filler. Locking car also locks storage compartment beneath center armrest.
  - Removing key from ignition disables engine computer to help prevent unauthorized starting of the engine.
  - Night security illumination uses the car's exterior lights to help illuminate a path after parking.
  - Remote illuminated entry system activates upon unlocking the car.
  - Driveaway locking can automatically lock all the doors when the car reaches 9 mph.
  - Automatic anti-theft alarm with towaway protection, remote panic feature, and automatic notification via Tele Aid.<sup>2</sup>
  - Emergency trunk release, located inside trunk and illuminated for 60 minutes after trunk lid is closed.
  - Integrated 3-button garage door control, compatible with HomeLink.<sup>3</sup> components and some other systems.

### INTERIOR FEATURES

- Power windows, each with one-touch express-down, plus one-touch lowering of both windows via power top switch.
- GFC-free air conditioning with dual temperature controls. Electrostatic dust filter.
- REST mode can ventilate cabin or recirculate residual heat for up to 30 minutes after car is turned off.
- <sup>1</sup> Manually telescoping steering column.
- Electronic cruise control. Auto-dimming rearview mirror. Covered visor vanity mirrors. Delayed-shutoff courtesy lamps.
- Lockable, lighted glovebox. Covered storage in console and beneath center armrest. Center-armrest compartment locks upon remote-locking of car. Storage pockets in doors and dash. Leather pocket on rear cabin wall.
- Pop-out dual cupholder with tray for small items. Concealed coin tray. Parcel net in right front footwell.

### SEATING AND TRIM

- 6-way manually adjustable seats. Leather upholstery, including seat surfaces, head restraints and door trim inserts.
- <sup>1</sup> 8-way power seats. Leather upholstery, including seat surfaces, head restraints and door trim inserts.
- AMG-design heated sport seats with leather upholstery and integrated head restraints.
- Machined aluminum trim on doors, dash and console, with polished aluminum accents.
- Hand-polished wood on doors, dash and console, with polished aluminum accents.
- Leather-trimmed steering wheel, shift knob and manual-transmission shift boot.
- Leather and wood trimmed steering wheel and shift knob. Leather-trimmed manual-transmission shift boot.
- Leather-trimmed AMG-design sport steering wheel and shift knob.
- Aluminum door-sill trim. Velour carpeting. Exclusive SLK carpeted floor mats.

### ● STANDARD ○ OPTIONAL — NOT AVAILABLE

<sup>1</sup> Optional as part of an Option Package. <sup>2</sup> First year's Tele Aid service provided at no additional cost with subscription and includes 30 minutes airtime (including required acquaintance call). Subscription is required for service to be active. Tele Aid only operates where cellular and GPS coverage are available. Owner must authorize vehicle tracking and file a police report. <sup>3</sup> **WARNING: THE FORCES OF A DEPLOYING AIR BAG CAN CAUSE SERIOUS OR FATAL INJURY TO A CHILD UNDER AGE 13. A CHILD UNDER 13 MUST NOT BE A PASSENGER IN THIS VEHICLE UNLESS THE CHILD IS BELTED INTO AN APPROPRIATE, PROPERLY INSTALLED BABYSEAT-COMPATIBLE CHILD SEAT. SEE OPERATOR'S MANUAL FOR ADDITIONAL WARNINGS AND INFORMATION ON AIR BAGS, SEAT BELTS AND CHILD SEATS.** <sup>4</sup> The roll bar system is designed to enhance the level of rollover protection compared to an open vehicle without one. No system, no matter how sophisticated, can eliminate the chance of injury in an accident. Please always wear your seat belt. <sup>5</sup> Z-rated tires are optimized for performance driving and may provide reduced ride comfort, increased tire noise, substantially increased treadwear and greater susceptibility to damage compared with H-rated tires. <sup>6</sup> Requires heated seats or Option Package K4.

## SLK230 KOMPRESSOR COUPE/ROADSTER SLK320 COUPE/ROADSTER SLK32 AMG COUPE/ROADSTER

### AUDIO AND COMMUNICATIONS

- Bose<sup>®</sup> sound system with four door-mounted speakers, dual subwoofers, and automatic speed-sensitive volume.
- AM/FM stereo/weatherband radio with scan and dual-sensitivity seek tuning, concealed autoreverse cassette player with music search, and anti-theft coding. Operating panel integrates controls and displays for optional phone.
- Fiber-optic network offers precise, high-speed communication among components.
- Tele Aid uses Global Positioning System (GPS) satellites to pinpoint the current location of your car, plus a cellular link to provide 24-hour contact with Mercedes-Benz for emergency aid (SOS button), information (i-button) or Roadside Assistance (wrench button). Automatic Collision Notification engages SOS function if an air bag or Emergency Tensioning Device (ETD) deploys. Tele Aid also includes Automatic Alarm Notification, stolen vehicle tracking, and remote keyless unlocking service.<sup>2</sup>
- Tele Aid Concierge Service, standard with basic Tele Aid subscription, offers personal services via the i-button, including arrangements for restaurant, hotel, airline or car-rental reservations, tickets to cultural and sporting events or tourist attractions, and delivery of flowers or gifts.<sup>2</sup>
- Fixed-mast AM/FM antenna on rear fender. Cellular antenna integrated in rear bumper. GPS antenna on trunk lid.

### INSTRUMENTATION

- Electronic analog speedometer, tachometer, fuel gauge and coolant temperature gauge.
- Ivory-color instruments with amber backlighting of markings and indicators.
- Silver-color instruments with amber backlighting of markings and indicators.
- Electronic digital odometer, resettable trip meter, quartz clock, outside temperature indicator, and display of Touch Shift gear selection (on models with automatic transmission).
- Flexible Service System calculates and displays distance remaining to next basic maintenance service based on actual driving conditions, some indicators of oil condition, and engine loads, rpm and operating temperatures.
- Warning lights for exterior lamp failure and low fuel, engine oil, coolant and washer fluid.
- Audible reminders to release parking brake, switch off headlamps and remove key from ignition.

### RESTRAINT SYSTEMS

- Integrated Restraint System: Driver and passenger are each provided with a front air bag, door-mounted side-impact air bag, knee bolster, and 3-point seat belt with Emergency Tensioning Device (ETD) and belt force limiter.<sup>3</sup>
- Occupancy sensor prevents passenger's air bags from deploying if seat is unoccupied. An ETD will not deploy if seat belt is unfastened. Lower front seat-belt points are attached to seat frames.
- Dual head restraints.
- Dual heat-treated micro-alloy steel tubular roll bars.<sup>4</sup>

### OPTIONS AND PACKAGES

- Driver-adaptive electronically controlled 5-speed automatic transmission with Touch Shift control.
- Heated seats (also available on SLK230 Kompressor and SLK320 as part of Package K4).
- Integrated trunk-mounted 6-disc CD changer.
- Integrated Motorola V60 microcompact digital portable telephone (dealer-installed).
- Integrated Motorola V60 microcompact digital portable telephone with voice control system for operation of commonly used telephone and audio system features (dealer-installed).
- Metallic paint.
- **Package K1:** 8-way power seats. Manually telescoping steering column.
- **Package K4:** Xenon High Intensity Discharge low-beam headlamps. Heated headlamp washers. SLK230 Kompressor and SLK320 models also add heated seats (standard on SLK32 AMG).
- **Sport Package SP1:** AMG ultrathin-spoke monoblock wheels (7.5Jx17 front, 8.5Jx17 rear). High-performance tires (225/45ZR17 front, 245/40ZR17 rear).<sup>5</sup> Sculpted front apron with black mesh air intakes, side sills and rear apron.

### SLK-CLASS *designo* EDITIONS

- <sup>6</sup> **Silver Edition:** *designo* Silver metallic paint. Charcoal interior with Silver Nappa leather and Charcoal Cinnamora wood trim. Charcoal floor mats with Silver leather trim. Silver leather-trimmed roll bars.
- <sup>6</sup> **Terra Cotta Edition:** *designo* Mocca Black metallic paint. Charcoal interior with Terra Cotta Nappa leather and Natural Cinnamora wood trim. Charcoal floor mats with Terra Cotta leather trim. Terra Cotta leather-trimmed roll bars.

# 2003 SLK-Class specifications

## ENGINE AND DRIVETRAIN

### Engine

Net power 192 hp @ 5,500 rpm  
 Net torque 200 lb-ft @ 2,500–5,000 rpm  
 Compression ratio 9.0:1

Fuel requirement Premium unleaded, 91 pump octane.  
 Fuel and ignition system Integrated sequential multipoint fuel injection and ignition with individual cylinder control of fuel spray, spark timing and antiknock.

Intake system SIM 4 engine management.  
 Variable intake-valve timing. Intercooled supercharger.

**Transmission** Standard: Fully synchronized 6-speed manual with clutch-starter interlock.  
 Optional: Driver-adaptive electronic 5-speed automatic. Touch Shift allows driver to manually downshift and allow upshifts by nudging the shift lever left or right from the Drive position.  
 Driver-selectable winter mode starts vehicle moving in 2nd gear or a second Reverse gear, to help improve takeoff on slippery surfaces. Display in instrument cluster indicates selected gear range.

Rear axle ratio 3.27:1

## TRACTION AND STABILITY

**Electronic Stability Program (ESP) and Automatic Slip Control (ASR)** ESP compares the driver's intended course, via steering and braking inputs, to the vehicle's response, via lateral acceleration, rotation (yaw) and individual wheel speeds. ESP then brakes individual front or rear wheels and/or reduces excess engine power as needed to help correct understeer (plowing) or oversteer (fishtailing). ESP incorporates the functions of ASR traction control, which senses drive-wheel slip and individually brakes the slipping wheel or wheels, and/or reduces excess engine power, until control is regained.<sup>1</sup>

## CHASSIS

**Suspension** Front: Independent double wishbone with triangular lower control arms, anti-dive geometry and stabilizer bar. Rear: Independent 5-arm multilink with anti-dive geometry and stabilizer bar. Separate gas-pressurized shock absorbers and coil springs.

**Steering** Recirculating-ball with power assist and hydraulic damper, 3.1 steering wheel turns lock-to-lock. Turning circle: 32.9 ft/10.3 m, curb-to-curb.  
**Wheels**, aluminum-alloy, standard 7-spoke design, 7.0Jx16 front and 8.0Jx16 rear.  
 with optional Sport Package AMG ultrathin-spoke monoblock, 7.5Jx17 front and 8.5Jx17 rear.

**Tires**, high-performance radial,<sup>2</sup> standard 205/55R16 91V front and 225/50R16 92V rear.  
 with optional Sport Package 225/45ZR17 front and 245/40ZR17 rear.  
 Spare tire Collapsible compact limited-use tire on lightweight wheel, with portable electric air compressor.

**Brakes**, dual-circuit power-assisted 4-wheel disc, front discs ventilated.  
**Antilock Braking System (ABS) and Brake Assist** ABS senses impending wheel lockup under heavy braking and pumps the front brakes individually or the rear brakes together (to help maintain stability) as needed up to 30 times per second, to prevent lockup and maintain steering ability. Brake Assist senses emergency braking via the speed at which the driver presses the brake pedal and immediately applies maximum available power boost, potentially reducing the overall stopping distance by eliminating the delay caused by a common human tendency not to brake hard enough, soon enough. Letting up on the brake pedal releases Brake Assist.<sup>3</sup>

## PERFORMANCE

**Acceleration**, 0–60 mph<sup>4</sup> 6.9 seconds  
**Fuel economy**, EPA<sup>5</sup>/highway<sup>6</sup> estimates 20 mpg/30 mpg  
**Emission certification** Low Emission Vehicle (LEV).

## DIMENSIONS

**Wheelbase** 94.5 in./2,400 mm  
**Overall length** 157.9 in./4,010 mm  
**Overall height** 50.4 in./1,279 mm  
**Overall width** 67.5 in./1,715 mm  
**Track** (front—rear) 58.6 in./1,488 mm—58.8 in./1,485 mm  
**Coefficient of drag** 0.35 with top up  
**Curb weight** (manual—automatic) 3,055 lb/1,385 kg—3,110 lb/1,410 kg

**Headroom** 37.4 in./950 mm  
**Legroom** 42.7 in./1,084 mm  
**Shoulder room** 51.7 in./1,313 mm  
**Cabin capacity** 43.8 cu ft/1,240 liters  
**Trunk capacity** (top up—top down) 9.5 cu ft/271 liters—3.6 cu ft/104 liters

<sup>1</sup> No system, no matter how sophisticated, can repeal the laws of physics or overcome careless driving actions. Please always wear your seat belt. <sup>2</sup> V-rated and Z-rated tires are optimized for performance driving and may provide reduced ride comfort, increased tire noise, substantially increased treadwear and greater susceptibility to damage compared with H-rated tires. <sup>3</sup> Braking effectiveness also depends on proper brake system maintenance, and tire and road conditions. <sup>4</sup> Stated rates of acceleration are based upon manufacturer's track results and may vary depending upon model, environmental and road surface conditions, driving style, elevation and vehicle load. <sup>5</sup> 2002 EPA estimated mpg to the estimated mpg to the estimated mpg of other vehicles. You may get different mileage depending on how fast you drive, weather conditions and trip length. <sup>6</sup> Your actual highway mileage will probably be less than the highway estimate. 2002 figures shown. 2003 figures unavailable at time of publication. See your dealer.

## SLK 320 COUPE/ROADSTER

3,199-cc SOHC 18-valve 90° V-6. High-pressure die-cast alloy cylinder block, alloy heads.

215 hp @ 5,700 rpm  
 229 lb-ft @ 3,000–4,600 rpm  
 10.0:1

Premium unleaded, 91 pump octane.

ME 2.8 engine management with two spark plugs per cylinder and individual cylinder control of spark timing and antiknock. Electronic throttle.  
 Magnesium 2-stage resonance intake manifold increases intake runner length at lower rpm for improved response.

**Standard:** Fully synchronized 6-speed manual with clutch-starter interlock.  
**Optional:** Driver-adaptive electronic 5-speed automatic. Touch Shift allows driver to manually downshift and allow upshifts by nudging the shift lever left or right from the Drive position.  
 Driver-selectable winter mode starts vehicle moving in 2nd gear or a second Reverse gear, to help improve takeoff on slippery surfaces. Display in instrument cluster indicates selected gear range.

Rear axle ratio 3.27:1

## SLK 32 AMG COUPE/ROADSTER

AMG-built intercooled supercharged 3,199-cc SOHC 18-valve 90° V-6. High-pressure die-cast alloy cylinder block. Reinforced crankshaft and valvetrain. Alloy heads. Lightweight camshafts.

349 hp @ 6,100 rpm  
 332 lb-ft @ 4,400 rpm  
 9.0:1

Premium unleaded, 91 pump octane.

Intercooled helical high-pressure supercharger with electromechanical clutch.

AMG-enhanced driver-adaptive electronic 5-speed automatic. Touch Shift allows driver to manually downshift and allow upshifts by nudging the shift lever left or right from the Drive position. SpeedShift™ provides up to 35% faster gear changes, automatically downshifts during braking, prevents unwanted upshifting while cornering, offers one-touch selection of the best gear for maximum acceleration, and features torque converter lockup in all forward gears. Also includes driver-selectable winter mode and instrument-cluster display of selected gear range.

Rear axle ratio 3.07:1

Front: Independent 5-arm multilink with anti-dive geometry and stabilizer bar.

Rear: Independent 5-arm multilink with anti-dive geometry and stabilizer bar. Separate gas-pressurized shock absorbers and coil springs.

5-spoke design, 7.0Jx16 front and 8.0Jx16 rear.  
 AMG ultrathin-spoke monoblock, 7.5Jx17 front and 8.5Jx17 rear.

205/55R16 91V front and 225/50R16 92V rear.  
 225/45ZR17 front and 245/40ZR17 rear.

4-wheel disc, front discs ventilated.  
 ABS senses impending wheel lockup under heavy braking and pumps the front brakes individually or the rear brakes together (to help maintain stability) as needed up to 30 times per second, to prevent lockup and maintain steering ability. Brake Assist senses emergency braking via the speed at which the driver presses the brake pedal and immediately applies maximum available power boost, potentially reducing the overall stopping distance by eliminating the delay caused by a common human tendency not to brake hard enough, soon enough. Letting up on the brake pedal releases Brake Assist.<sup>3</sup>

## PERFORMANCE

**Acceleration**, 0–60 mph<sup>4</sup> 4.8 seconds  
**Fuel economy**, EPA<sup>5</sup>/highway<sup>6</sup> estimates 18 mpg/24 mpg  
**Emission certification** Low Emission Vehicle (LEV).

## DIMENSIONS

**Wheelbase** 94.5 in./2,400 mm  
**Overall length** 157.9 in./4,010 mm  
**Overall height** 50.4 in./1,279 mm  
**Overall width** 67.5 in./1,715 mm  
**Track** (front—rear) 58.6 in./1,488 mm—58.8 in./1,485 mm  
**Coefficient of drag** 0.35 with top up  
**Curb weight** (manual—automatic) 3,220 lb/1,460 kg

**Headroom** 37.4 in./950 mm  
**Legroom** 42.7 in./1,084 mm  
**Shoulder room** 51.7 in./1,313 mm  
**Cabin capacity** 43.8 cu ft/1,240 liters  
**Trunk capacity** (top up—top down) 9.5 cu ft/271 liters—3.6 cu ft/104 liters

# exhilaration

Search the world over and you'll not likely find a more captivating, compelling reason to buckle your seat belt and take to the open road.



### 3 MODELS, 4 SEASONS

**The SLK, by design, has never been content to stand still.** From the moment the idea of a new Mercedes-Benz **coupe/roadster** was introduced, it moved people. How could it not? The SLK's **style** captures an elusive quality best articulated not by words, but by a wide grin and a quickened pulse rate. Its use of **innovative technologies** serves to make an SLK as **fun to drive** in fall, winter or spring as it is on an endless summer evening. And its adherence to the **safety engineering**

standards of Mercedes-Benz brought a **new level of comfort** to the sports car concept.

For 2003, the **three models** of the SLK-Class remain as captivating a collection of performers as ever. From the **supercharged SLK 230 Kompressor** to the smooth **V-6 powered SLK 320** to the **lightning-quick SLK 32 AMG**, there's an SLK that will move you in wondrous ways. Even when it's standing still.

SLK 230 Kompressor shown with optional digital phone with voice control system.

## CATCH SOME RARE AIR

Simply put, the SLK230 Kompressor is **an extraordinary sports car**. Ordinary cars don't have engines that **supercharge the air** entering their combustion chambers for more power per stroke. Or hardtops that retract at the touch of a button, turning them **from coupes to roadsters in 25 seconds**. Ordinary cars don't have interiors **trimmed with machined aluminum**. Or design details evolved from automotive ancestors so expressive, they

captured Andy Warhol's eye. Yet for all its special traits, this is not a temperamental machine. Its Electronic Stability Program (ESP) **helps ensure the car's poise through a curve**.<sup>1</sup> Brake Assist **maximizes its available braking force in a panic stop**.<sup>2</sup> And a choice of transmissions — a **6-speed manual** or an optional **driver-adaptive 5-speed automatic** with Touch Shift control — lets you apply the **192 horsepower** of this SLK with precision.

The SLK230 Kompressor is as rewarding to own as it is to drive: In its most recent projection of five-year total ownership costs, IntelliChoice determined that the projected **maintenance and insurance costs for the Mercedes-Benz SLK230 Kompressor are lower than most of its competitors**.<sup>3</sup> So go ahead, indulge yourself in the high-performance pleasures of what is arguably one of the world's most fiscally responsible sports cars.

1 No system, no matter how sophisticated, can repeal the laws of physics or overcome careless driving actions. Please always wear your seat belt. 2 Braking effectiveness also depends on proper brake system maintenance, and tire and road conditions. 3 2002 The Complete Car Cost Guide™. [www.intellichoice.com](http://www.intellichoice.com).

Because the SLK-Class is about the sheer joy of driving.



# SLK 230 KOMPRESSOR

Supercharged 2.3-liter 16-valve 4-cylinder  
192 hp @ 5,500 rpm  
200 lb-ft torque @ 2,500-5,000 rpm

# supercharging

Inside the SLK cockpit, your senses and emotions are heightened.



SLK230 Kompressor shown with optional automatic transmission.

## SLK230 KOMPRESSOR INTERIOR

The cabin of the SLK230 Kompressor is equally suited to either point of view: **driver-oriented control center**, or sumptuous haven from a hectic day. Its **contoured leather-upholstered seats**, rubber-studded pedals, **chrome-ringed instrumentation**, and leather-wrapped shifter and steering wheel encourage serious fun behind the wheel. So you can play at the top of your game, in style,

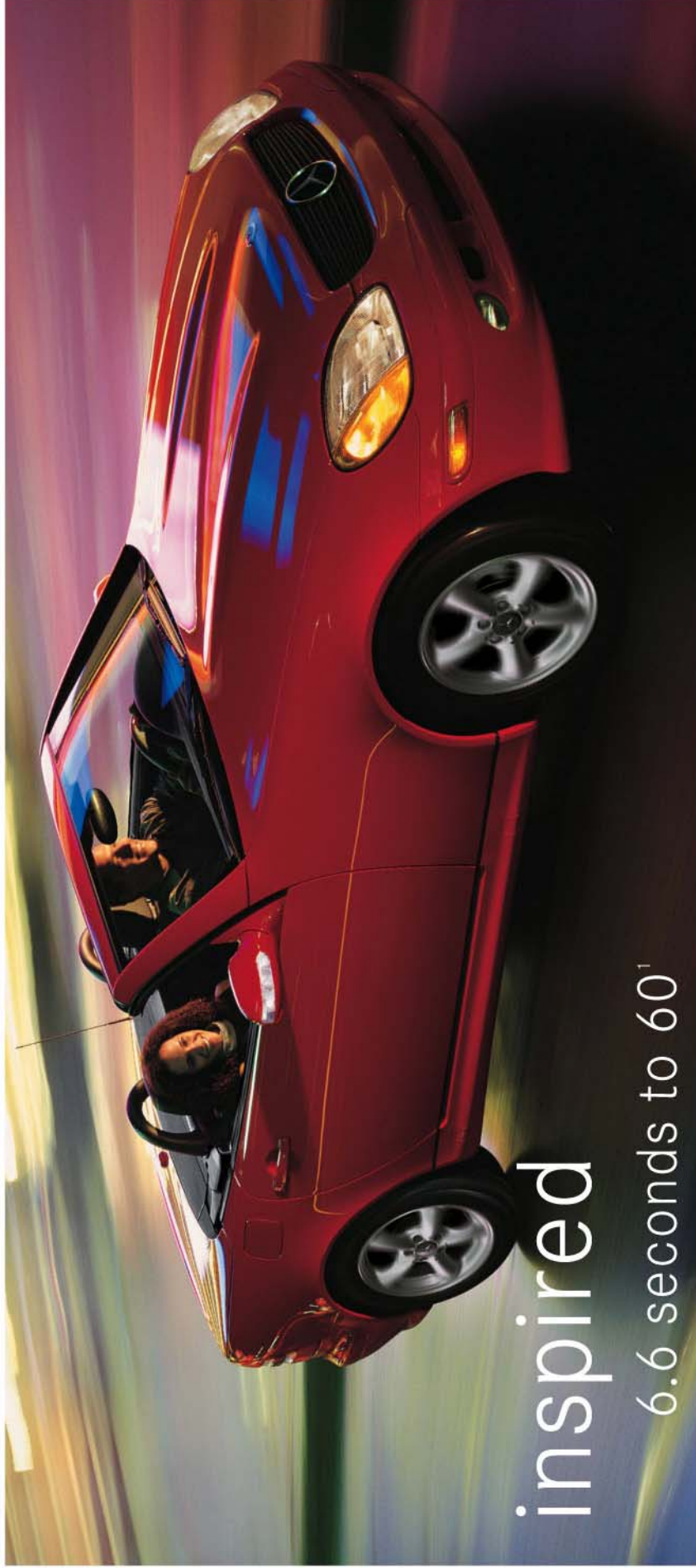
on any stretch of road. Or you can simply relax and soak up the SLK's **soothing ambience**. The air conditioning filters the cabin air electrostatically. A **Bose® premium sound system** with dual subwoofers has been engineered to deliver clear, full-dimensional audio whether the hardtop is up or down, and it automatically adjusts its volume to the speed you're traveling. Sport or spa? Choose both.

## A SPORTS CAR BUILT FOR TWO

Two occupants, one SLK230 Kompressor, no problem. **Dual temperature controls** accommodate differing desires for you and your passenger. A **dual cupholder and tray** glide out of the center of the dash. And to coordinate home security and garage door controls, three **HomeLink® compatible** buttons are integrated overhead, within easy reach of driver or passenger.



"It's a great compromise between comfortable touring convertible and road warrior performance machine." —Edmunds.com



inspired  
6.6 seconds to 60<sup>1</sup>

#### HABIT-FORMING

The SLK320 is powered by a **V-6 engine** that has become one of the engineering jewels of the Mercedes-Benz line. From the instant you first twist the key and hear the silky tear of its exhaust note, this lightweight 3.2-liter 18-valve engine will seduce you. Whether your aim is to **cruise comfortably or engage in a more enthusiastic pursuit** of driving

pleasure, the SLK320's two-stage resonance intake manifold produces **torque on demand** throughout its wide, deep power band. And whether you choose the **6-speed manual gearbox** or the **optional Touch Shift 5-speed automatic transmission**, the 215-hp SLK320 feels like you'd always imagined a Mercedes-Benz sports car would.

# SLK320

3.2-liter 18-valve V-6  
215 hp @ 5,700 rpm  
229 lb-ft torque @ 3,000-4,600 rpm

<sup>1</sup> Stated rates of acceleration are based upon manufacturer's track results and may vary depending upon model, environmental and road surface conditions, driving style, elevation and vehicle load.



SLK320 shown with optional automatic transmission and Package K.



## SLK320 INTERIOR

There remain few places in the world where the **hand-fitting of natural materials** is a skill still passed on from master to apprentice. Step across the **aluminum-trimmed door sill** and you'll see that the interior of the SLK320 is just such a place. The care taken to select, finish and fit its **black birdseye maple or Calypso wood** trim is evident every time your hand, or eye, falls on the steering wheel, shift knob, console, dash or doors.

Yet this is a thoroughly contemporary cabin. Its **ivory-color instrumentation** blends the very best of analog dials and digital readouts, illuminated by **amber backlighting** that aids legibility. Its **leather-covered seats** are **power-adjustable eight ways**. And its controls include the ultimate hot button: an illuminated red switch shaped like a hardtop, ready to raise or retract the steel roof at your command.

# SPORT PACKAGE

# tempting



## SLK-CLASS SPORT PACKAGE

Every SLK turns heads. This one leaves them spinning. With the optional Sport Package, you'll add to the already intense look of an SLK 230 Kompressor or SLK 320. From every angle, its alterations artfully reshape the SLK: a **wind-sculpted front apron with black-mesh air intakes**, chiseled sills along each side, and an **aggressive rear apron** that reveals the **polished stainless-steel exhaust tip**. The Sport Package adds to the performance intensity, too: With **225/45ZR17 front and 245/40ZR17 rear high-performance tires**<sup>1</sup> rolling on larger, staggered-width **17" AMG ultrathin-spoke monoblock alloy wheels**, you'll up the thrill quotient when the rubber meets the road.

<sup>1</sup> Z-rated tires are optimized for performance driving and may provide reduced ride comfort, increased tire noise, substantially increased treadwear and greater susceptibility to damage compared with H-rated tires.



SLK320 shown with optional Sport Package and Package K4.



## NEVER OUT OF SEASON

The cars of the SLK-Class are remarkable for a number of reasons, not the least of which is **an ability to transcend seasons.** Sun. Rain. Cold. An SLK never forces you to choose between the **comfort and protection of a coupe**, and the **character and panache of a true convertible.** Its retractable steel roof design allows an SLK to transform itself from closed coupe to top-down roadster in

approximately 25 seconds. **Press a button**, and the top automatically unlatches from the windshield frame, folds in half, then quietly **stows itself inside the trunk.** And there's still a surprising amount of trunk space available. There are **no levers to pull or latches to open.** The security and refinement of a coupe combined with the open-air passion of a roadster. That's the four-season SLK.

# transforming



It's a coupe one moment, a roadster the next. There is nothing else like the SLK in this class.



# motivated engines



## SLK 230 KOMPRESSOR

In the realm of sports cars, what's under the hood really counts

for a lot. The SLK 230

Kompressor features a

**192-hp 2.3-liter** 16-valve

4-cylinder engine fitted

with an **intercooled supercharger**, variable intake-valve timing and sequential fuel injection. The result is a satisfying rush of power, a **broad plateau of torque** and impressive responsiveness under all driving conditions, as well as **certified low emissions**.



## SLK 320

Speaking with the

**silken authority** of

six cylinders, the

SLK 320's **3.2-liter**

engine purrs softly

but carries a big stick.

Thanks to technology such

as a two-stage resonance

intake manifold and electronic throttle, the

**215-hp V-6** is a willing and responsive partner

in your driving experience. Twin-spark igni-

tion and 3-valve-per-cylinder design help the

SLK 320 attain **Low Emission Vehicle** status.



High performance, low emissions, high fuel economy – all living in perfect harmony under the twin power domes of the SLK hood.

SLK 320 shown with optional Sport Package and Package K4.

# engaging in the perfect gear



## 6-SPEED MANUAL



Standard on the SLK230 Kompressor and SLK320, our 6-speed manual transmission gives you **precise and personal control**. With six forward speeds, the steps between the ratios are closer, allowing the driver to **easily match engine revs** with the driving speed for seamless downshifts. A **short-throw shifter** makes for quick, snappy shifts. And an **extra-low first gear** boosts acceleration off the line.

## 5-SPEED TOUCH SHIFT AUTOMATIC



Optional in the SLK230 Kompressor and the SLK320, our 5-speed Touch Shift automatic is like having two gearboxes in one. In automatic mode, **driver-adaptive** sensors monitor your driving style and match upshifts and downshifts accordingly. The **Touch Shift** feature allows the driver to make **manual-style upshifts and downshifts** by tapping the shift lever right or left from the Drive position.



SLK320 shown with optional Sport Package.

Whichever gearbox you pick, the experts are on your side. *Motor Trend* called the SLK's standard 6-speed manual transmission "seamless," and *AutoWeek* gave the SLK's 5-speed automatic high marks for its "crisp operation."



"On the A5 freeway west of Lisbon, the SLK32 roared to 135 mph just like that... AMG's SpeedShift transmission is quite effective." —Automobile Magazine<sup>1</sup>



## FULL-BORE, NEVER BORING

With experience gained from AMG's racing championships, the SLK32 AMG delivers full-throttle fireworks straight from the factory. At the heart of an SLK32 is a **handcrafted-by-AMG 3.2-liter V-6**, fitted with an intercooled, high-pressure helical **supercharger**. The engine pumps out **349 peak horsepower** and **332 lb-ft of torque**, giving the car an astonishing **0-60 time of just 4.8 seconds**.<sup>2</sup> Equally dynamic is the standard 5-speed Touch Shift automatic transmission with **AMG SpeedShift™** technology. SpeedShift

does what its name implies: It provides **quicker gear changes** and can downshift during braking without upsetting the SLK's balance, or **hold a gear during hard cornering** to avoid an unwanted upshift. Large, **AMG-enhanced 4-wheel vented disc brakes** haul the SLK32 down from speed. Standard fare includes dual polished stainless-steel exhaust tips, rear spoiler, sculpted front and rear aprons, chiseled side skirts, **Z-rated high-performance tires**<sup>3</sup> and staggered-width **17" AMG double-spoke alloy wheels**.

<sup>1</sup> Always obey local speed laws. <sup>2</sup> Stated rates of acceleration are based upon manufacturer's track results and may vary depending upon model, environmental and road surface conditions, driving style, elevation and vehicle load. <sup>3</sup> Z-rated tires are optimized for performance driving and may provide reduced ride comfort, increased tire noise, substantially increased treadwear and greater susceptibility to damage compared with H-rated tires.

# extreme

## SLK32 AMG

Handcrafted, supercharged 3.2-liter 18-valve V-6  
349 hp @ 6,100 rpm  
332 lb-ft torque @ 4,400 rpm

“An upscale German sports car that will outrun others in its class, while providing a high level of comfort for its occupants.” —*Road & Track*



### SLK32 AMG INTERIOR

Encased within this finely crafted cabin, surrounded by **supple leather** and rich **black birdseye maple wood trim**, it would be easy to forget that the SLK32 AMG is a serious performance machine with a top speed electronically limited to 155 mph.<sup>1</sup> Soon enough, however, you'll come back to your primal senses and remember what this cockpit is designed to enhance: pure exhilaration. The **supportive, deeply bolstered AMG sport seats** with integrated head restraints — heated and covered in **rich AMG-design leather** — hold you relaxed yet alert to the tasks at hand. An array of **silver-faced AMG instruments** sits at center stage. In your grip, a **leather-trimmed AMG steering wheel** and shifter. All for the purpose and pleasure of sport. But then, that's what AMG is all about.

<sup>1</sup>Always obey local speed laws.





Multilink suspension

Brake Assist

Responsive steering

Electronic Stability Program

# tenacious

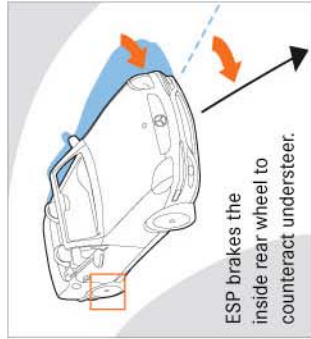
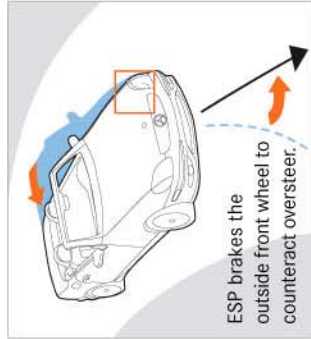
## A STORY OF YOUR HANDS, AND OUR GRIP

Have you ever stopped to consider what it is that actually connects you to the road? Four patches of rubber, each not much larger than a human hand. That's it. The rest is all a system of connections between your hands and feet and the tires. In the case of an SLK, a highly refined, highly responsive system.

It starts with the architecture of the car itself. Unlike conventional convertibles, the SLK's steel roof helps provide rigidity with the top up. The stiff monocoque body means everything mounted to it – including the multilink rear suspension – performs more precisely.

That precision translates into driving feel that's fine-tuned to feed back the best of the road, and filter out the worst. And the SLK's braking response starts the instant you summon its powerful 4-wheel disc brakes.

An array of electronic systems aid the SLK driver under less than perfect circumstances! A 4-channel Antilock Braking System (ABS) helps to prevent wheel lockup during hard braking, thus helping to preserve steering control. Brake Assist instantly and automatically applies maximum power brake boost should it detect emergency braking.



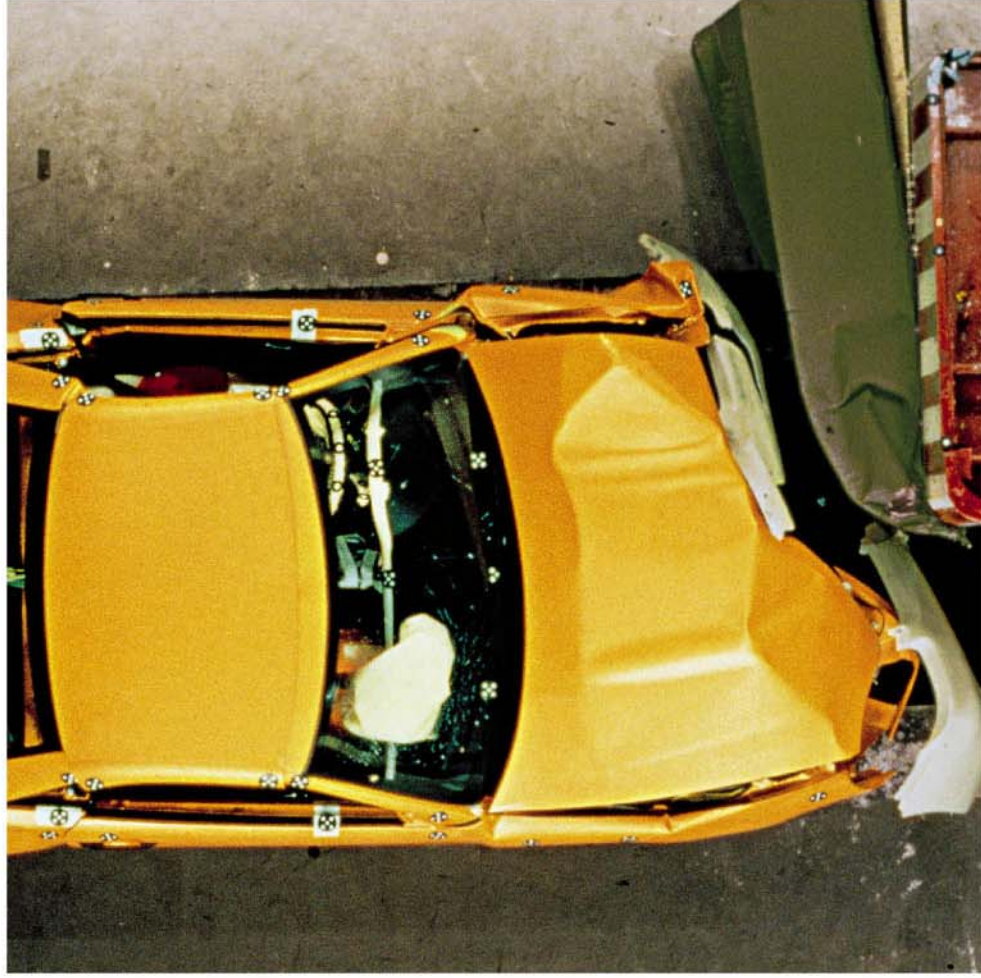
**Automatic Slip Control (ASR)** senses drive-wheel slip under acceleration and can apply the brake at the slipping wheel or reduce excess engine power to help restore control.

And our **Electronic Stability Program (ESP) helps correct for oversteer or understeer** to keep your SLK on its intended path. If the ESP sensors detect the SLK deviating from your desired course while cornering – based on your steering and braking actions – the system will respond by braking individual wheels or backing off on the throttle to help you regain control and retain your composure.

“The SLK hugs the road and tackles curves with the same ease as a racecar.” – MSN Carpoint, Carpoint.com



<sup>1</sup> No system, no matter how sophisticated, can repeal the laws of physics or overcome careless driving actions. Please always wear your seat belt. Braking effectiveness also depends on proper brake system maintenance, and tire and road conditions.



# protective



“Safety remains stellar on all SLKs.” – TheCarConnection.com

## A STUDY IN INTEGRITY

Integrity is one word that defines a Mercedes. That’s especially clear from the viewpoint of the SLK’s safety engineering. From the extensive use of **high-strength/low-alloy steel** in critical areas throughout the body, to the heat-treated **micro-alloy-steel dual roll bars** mounted behind the seats, the SLK features an **integrated safety system** working full-time toward one goal: to help protect

the precious cargo aboard. **Dual front and door-mounted side-impact air bags** are another part of this occupant-protection system. In either a front or rear impact of sufficient severity, **Emergency Tensioning Devices (ETDs)** remove seat-belt slack. And **belt force limiters** help to distribute peak impact forces more evenly between the seat belts and the front air bags.

Mercedes-Benz builds vehicles for people. That’s why our safety-testing regimen – with **no fewer than 28 different crash tests** – demands more integrity from a car than the laws of any government. This mission is nothing new for us – the SLK’s **impact-absorbing front and rear crumple zones** trace back to an innovative safety idea that Mercedes-Benz patented more than half a century ago.



**1 WARNING:** THE FORCES OF A DEPLOYING AIR BAG CAN CAUSE SERIOUS OR FATAL INJURY TO A CHILD UNDER AGE 13. **A CHILD UNDER 13 MUST NOT BE A PASSENGER IN THIS VEHICLE** UNLESS THE CHILD IS BELTED INTO AN APPROPRIATE, PROPERLY INSTALLED **BABYSMART-COMPATIBLE** CHILD SEAT. SEE OPERATOR’S MANUAL FOR ADDITIONAL WARNINGS AND INFORMATION ON AIR BAGS, SEAT BELTS AND CHILD SEATS.

# value a lifetime of rewards

Simply stated, a **Mercedes-Benz is a great value.** There, we said it. Now let us prove it.

Throughout its lifetime, a **Mercedes keeps paying its owner unexpected dividends.** If you're of a mind where true value is defined in dollars, bring on the numbers. Beyond the obvious SLK advantage of buying two cars—a coupe and a roadster—for the price of one, the SLK's generous list of standard features includes a lot of **stuff that's optional on the competition**, and some things **that aren't even offered on the SLK's rivals.** And should the time

come when you want to renew your automotive collection and put your SLK up for sale, think about this: **Mercedes-Benz vehicles are noted for holding their worth over time** and maintaining consistently high resale values.<sup>1</sup>

It all adds up to a likely cost of ownership that's probably a lot lower than you think.

The Mercedes-Benz Maintenance Commitment and your SLK's Flexible Service System work together to save you both money and time. For the duration of your New Vehicle Limited

Warranty, **basic maintenance is included at no extra charge.** And to make sure **you don't waste your time coming in for that service before it's needed**, the Flexible Service System tracks actual driving conditions as well as some indicators of oil condition, and tells you—via a display on the SLK's instrument cluster—when basic service is due.<sup>2</sup>

Mercedes-Benz USA is also making a nationwide effort to encourage dealers to keep parts and labor prices competitive with those of independent service providers.

Far beyond the money side of the equation, the **self-confidence** you feel in having Mercedes-Benz **reliability, durability and safety engineering** on your side adds a whole new dimension to the value story. So does having **the only Roadside Assistance that doesn't expire.**<sup>3</sup> And with a family of fuel-efficient, low-emission engines that all go a little easier on the planet, the Three-Pointed Star offers peace of mind you can take to the bank.

By any definition of value, a Mercedes-Benz is one of the smartest automotive decisions you can make.

1 Based on projections by IntelliChoice® for 2002 vehicles, most Mercedes-Benz models rank in the top third for retained value over all vehicles. 2002 The Complete Car Cost Guide™. www.intellichoice.com. 2 Includes oil change and other standard use level maintenance items identified in the Service Booklet for each model, at intervals determined by the Flexible Service System throughout the warranty period. Brake pads and discs, tire rotation and wiper blades are not covered. Driver is responsible for monitoring fluid levels and tire pressures between service visits. Limitations apply. 3 Roadside Assistance repairs may involve charges for service and parts.



According to IntelliChoice, an independent automotive research firm, the 2002 SLK 230 Kompressor has one of the highest retained values in its class.<sup>1</sup>



*designo*

## EDITIONS

Silver Edition

Terra Cotta Edition

handcrafted

just for you

### AN EXTRA TOUCH OF SLK EXCLUSIVITY

There is something unforgettable about art created by a **master's hands**. An SLK *designo* edition uniquely expresses such an artist's touch. Two **exclusive designo colors**, chosen to spotlight the SLK's form. The natural beauty and supple feel of **hand-selected Nappa leather**. Wood trim that's matched, shaped and finished by artisans. All this handcrafting breathes a singular identity into your SLK.



The cool substance of the *designo Silver Edition SLK* (below left) makes it the essence of sports-car style. Luminous *designo Silver paint* sets this SLK apart from the crowd. And inside, deep **Charcoal Cinnamora wood** trims the steering wheel, shift knob, doors, dash and console, while *designo Silver Nappa leather* delights the senses, washing over the SLK seats, doors and roll bars, and trimming the Charcoal floor mats.

The brilliant warmth of the *designo Terra Cotta Edition* is hinted at by its rich *designo Mocha Black paint*, and underscored by the hand-fitted interior. Buttery-soft **Terra Cotta Nappa leather** covers the seats and roll bars, and accents the doors and the edges of the exclusive floor mats. **Natural Cinnamora wood trim** enriches the console, dash, doors, steering wheel and shift knob.



SLK 230 Kompressor and SLK 320 *designo* editions require heated seats or Option Package K4. SLK 32 AMG *designo* editions include all-leather trim on steering wheel and shift knob. SLK 320 *designo* editions also shown with optional automatic transmission.



An invigorating rush of fresh air: *designo Silver Edition*



A few degrees make all the difference: *designo Terra Cotta Edition*



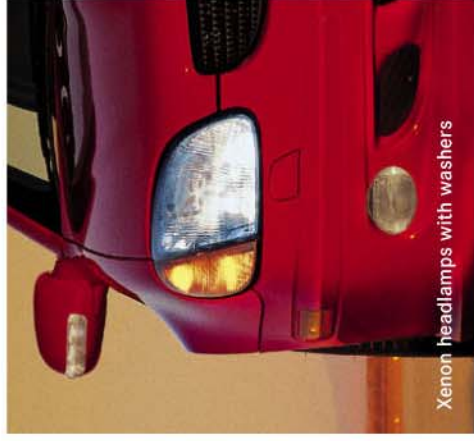
Manually telescoping steering column



Trunk-mounted 6-disc CD changer



Heated seats



Xenon headlamps with washers



8-way power seats



5-speed automatic transmission



Motorola V60 portable phone

## GET IT JUST THE WAY YOU WANT IT

We make sure that every SLK-Class model comes loaded with a surprising selection of standard features right out of the box. But adding a few extras to make your new SLK truly yours is a snap, thanks to a selection of **individual options** and value-priced **Option Packages**. To tailor your fit in an SLK230 Kompressor, for instance, we've got an Option Package that combines **8-way power seats** and a **telescoping steering column**.

## SLK-CLASS OPTIONS

Electrically **heated seats** can add a little extra warmth to your SLK's leather with two stages of warming and automatic shutoff. If the shift-for-yourself lifestyle isn't the right one for you, our silken **5-speed automatic transmission** continually adapts to your driving style — spirited or sedate — while its Touch Shift feature lets you take over the gear-change duties any time you want manual-style control.

When the road gets dark, **xenon headlamps** cast a brighter, more natural light onto the road ahead. The integrated microcompact **Motorola V60™ portable digital phone** has hands-free features and automatic phonebook downloading between handset and car. You can even add **voice control** of many phone and audio features. And our integrated trunk-mounted **6-CD changer** lets you add your own soundtrack to your long and winding road.